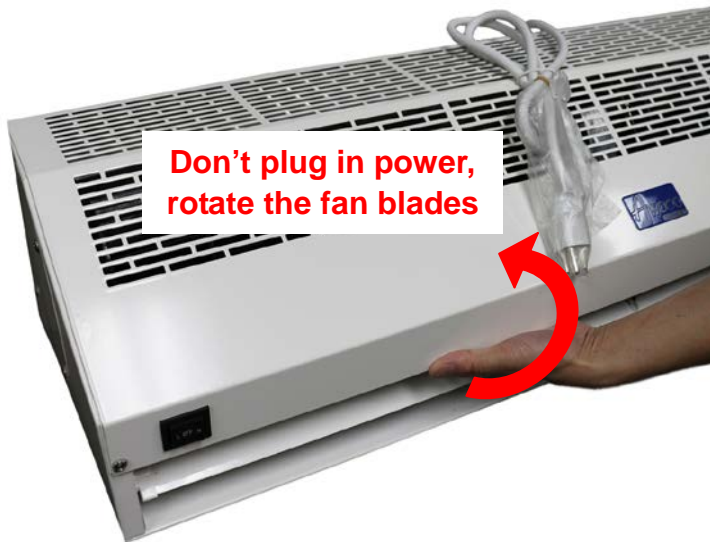




## Read This Test Instruction Before Power Up / Installation

1. Do NOT plug in power cord to power source, rotate the fan blades by a screw driver or hand.



2. If the fan blades don't rotate smoothly, remove the front cover screws and open the front cover.



The bearing might not be properly seated due to shipment bumping.

3. Remove screws on the side panel to reseal the fan blade's bearing, and then tighten the screws.



4. If needed, release the screw connecting the motor shaft to align the fan blade to the proper position that rotates smoothly. Then tighten the screw on the motor shaft.



5. After above test or fix, install the cover and plug in the power cord to 110-120V power source; turn the switch to H or L to test it.

6. If the air curtain works normally, refer to the User Guide section 3 through 7 to install the air curtain. Refer to section 10 for technical support.

Feel free to contact Awoco Customer Service for technical support or replacement parts. Website: [www.awoco.com](http://www.awoco.com), Email: [sales@awoco.com](mailto:sales@awoco.com)